



## Risk Assessment Form

Event/Activity: Geocaching/letter boxing/orienteering and photo trail					29.08.14
Event Coordinator: Debbie Thorpe Leader in Charge:			Numbers Attending:	Adults:	Children:
Consent for Event/Activity forms completed: (circle) Yes                  No                  N/A		Venue: Dudsbury Guide Camp		Instructor qualifications checked* Not Applicable	
Hazard	Who is affected?	What controls are in place?	Risk level (L/M/H)	Are further controls necessary?	Action by & date
Slips, Trips and Falls	All participants	Sensible outdoor shoes advised. Participants discouraged from running the course in overgrown areas. Extra care advised after dark, use of torches. Children working in small groups. Advise groups of animal holes, molehills, tree roots and plant stems.	M	Leader to ensure briefing	
Safeguarding re stranger danger/safe from harm/dog attack	All young participants	Young adult and child group sizes to be a minimum of 3 per group. Leaders to ensure sufficient adult supervision especially after dark. Supervision by additional leaders is recommended for caches 6-10 <b>due to public footpath.</b>	L	Leader to ensure Girlguiding Safe From Harm policies are adhered to.	
Man made obstacles: fencing, hedges, gates etc	All participants	No man made fences should be climbed. Pedestrian gates and stiles should be accessed with care to avoid finger trapping etc.	L		

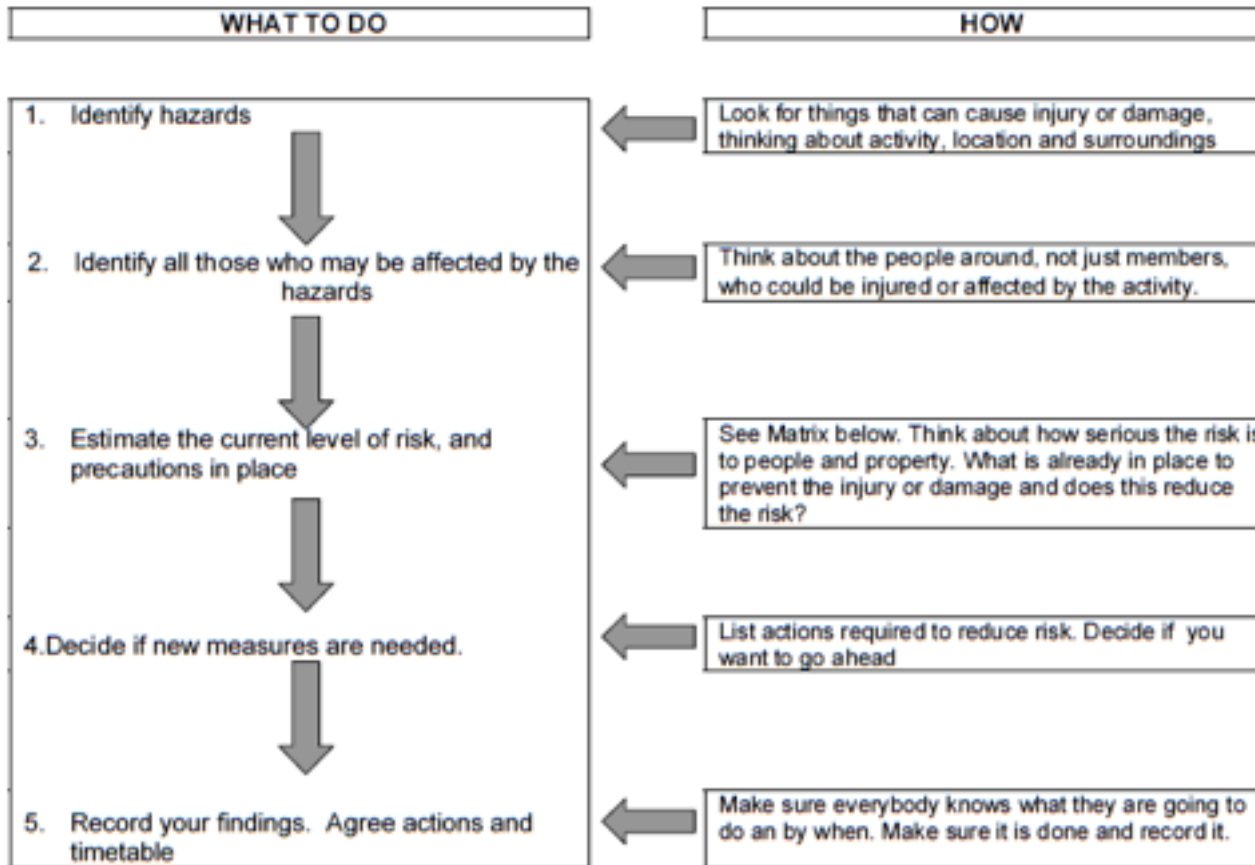
Extreme weather conditions	All participants	Extreme wet, icy or snowy conditions groups should be given guidance on speed and appropriate footwear and should only complete caches 1-5. Do not undertake activities in thunder and lightning or high winds due to wooded areas. Leader should ensure participants have appropriate wet/hot weather clothing, water and sun protection.	H		
Vehicle collision	All participants	It is recommended that gates are locked for this activity especially if including caches 6-10. If this is not possible then leaders wearing high vis jackets should ensure traffic is managed on site.	H		
Toxic or harmful plants	All participants	Groups should be advised to wash hands after activity and not to put their fingers or any berries, toadstools/mushrooms into their mouths. Participants should also be warned to avoid contact with stinging nettles, brambles and bracken sporing in late summer and not to touch or pick wild flowers.	L		
Environmental factors	All participants	There is a risk of insect bites. Recommend participants bring their own insect repellent. There is a risk of hay fever and other such allergic reactions and participants should bring necessary medication.	L		

--	--	--	--	--	--	--





## RISK MANAGEMENT



## RISK ASSESSMENT MATRIX

Severity	Slight Harm	Harmful	Extremely Harmful
Likelihood	superficial injuries, minor cuts and bruises	minor fractures, ill health leading to minor disability	multiple injuries, major fractures, fatalities
<b>UNLIKELY</b> Rarely happens	<b>LOW</b>	<b>LOW</b>	<b>MEDIUM</b>
<b>LIKELY</b> Often happens	<b>LOW</b>	<b>MEDIUM</b>	<b>HIGH</b>
<b>VERY LIKELY</b> Nearly always happens	<b>MEDIUM</b>	<b>HIGH</b>	<b>HIGH</b>